

## Documentation for eduroam

### Win XP Setup:

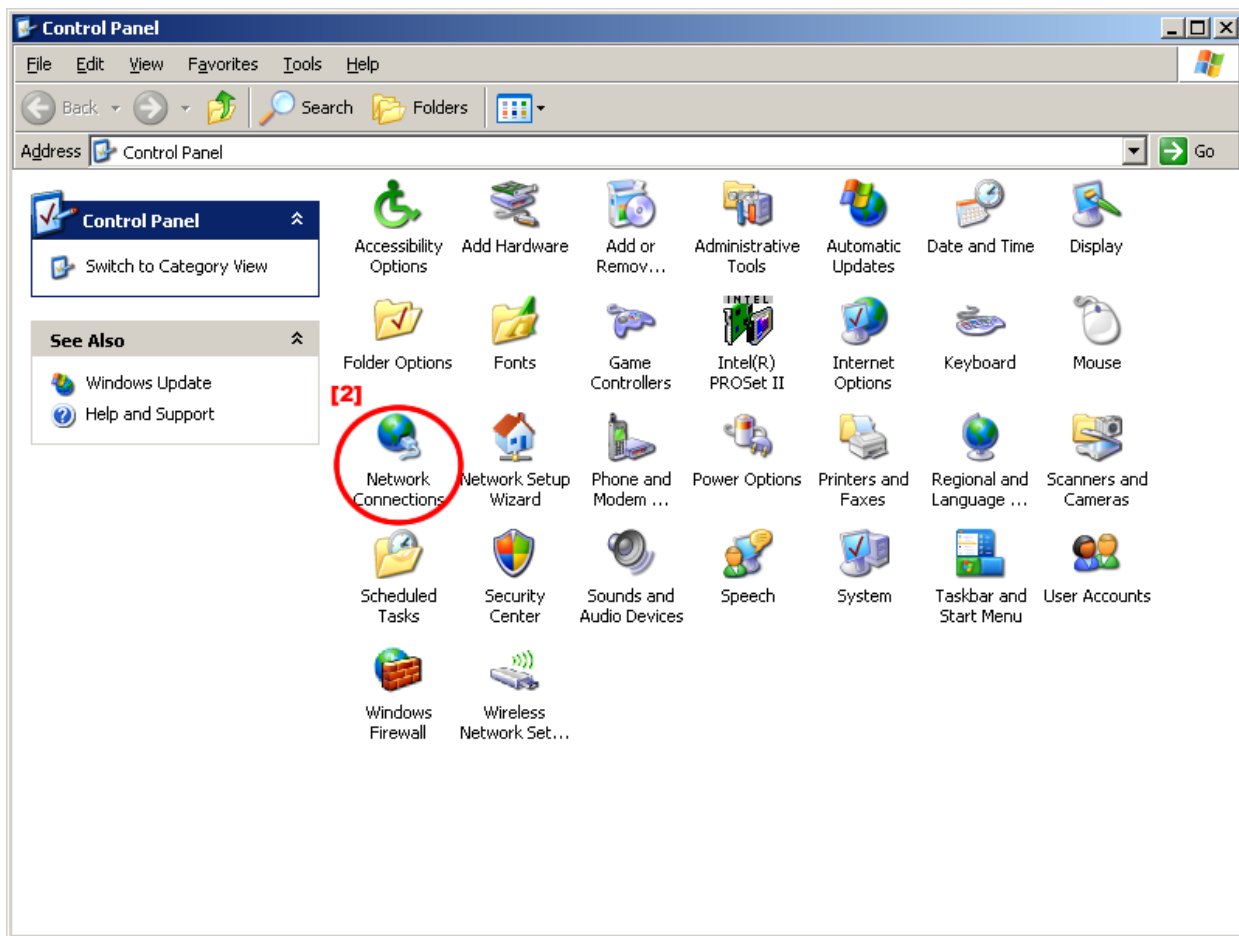
Please follow the procedure below to configure your XP machine to connect to WLAN. Once you have configured your machine, it will be automatically authenticated and connected to the WLAN whenever your computer is brought in range of the WLAN covered areas.

### WPA2 Configuration

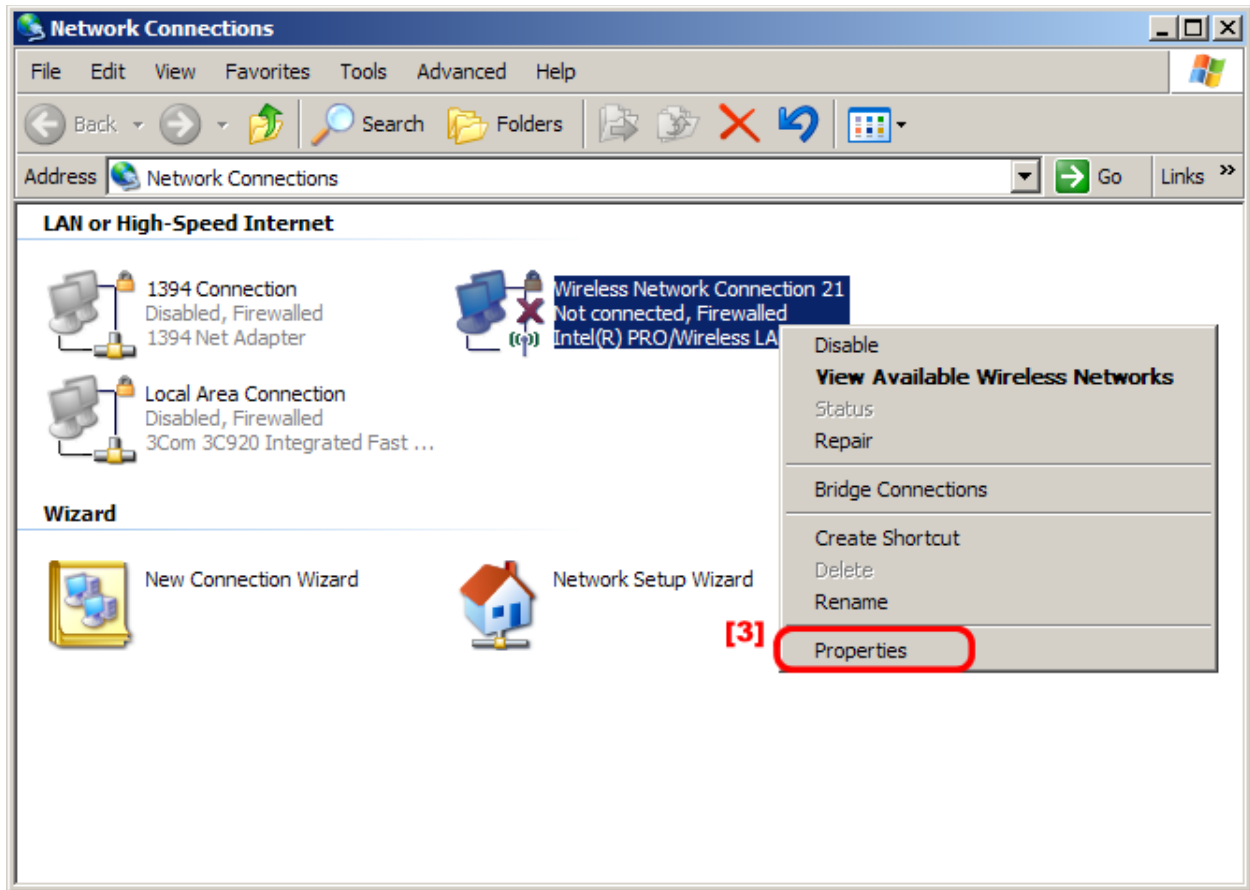
Click Start and select Run



Double click **Network Connections**



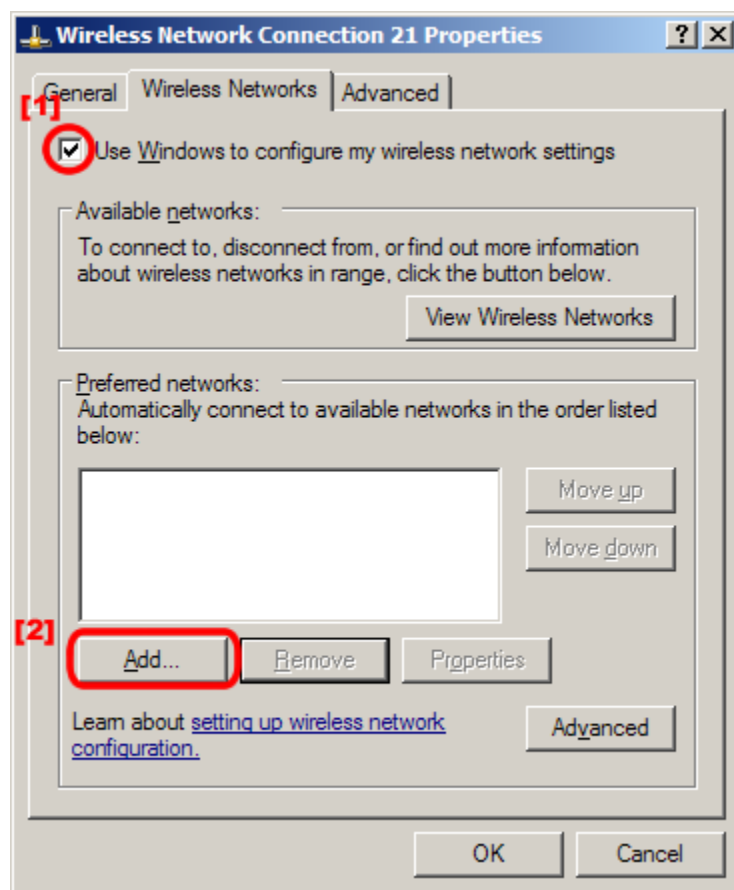
Right-click **Wireless Network Connection**, select **Properties**



Click the **Wireless Networks** tab

Check **Use Windows to configure my wireless network settings**

Click **Add**

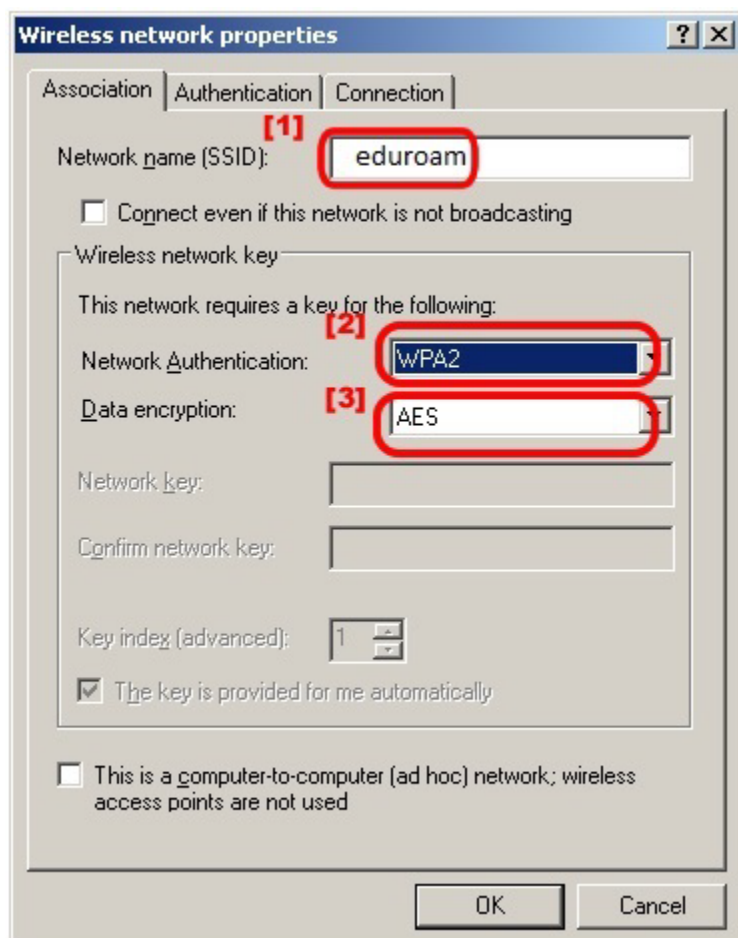


Click the **Association** tab

Type **eduroam** in the 'Network name (SSID)' field

Select **WPA2** in the 'Network Authentication' field

Select **AES** in the 'Data encryption' field

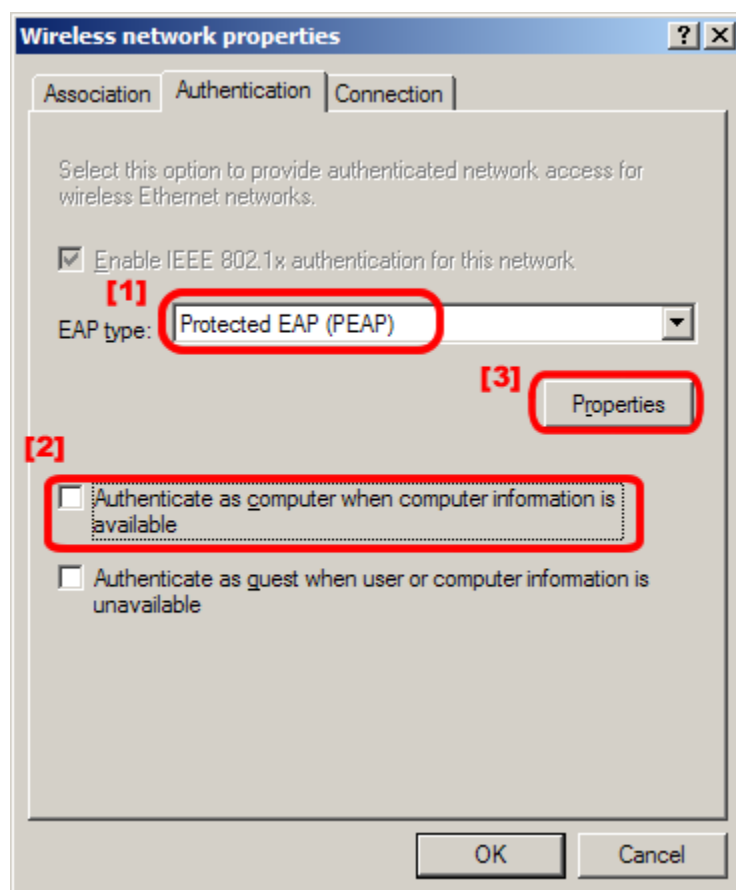


Click the **Authentication** tab

Select **Protected EAP (PEAP)** in 'EAP type' field

Un-check **Authenticate as computer when computer information is available** and **Authenticate as guest when user or computer information is unavailable**

Click **Properties**



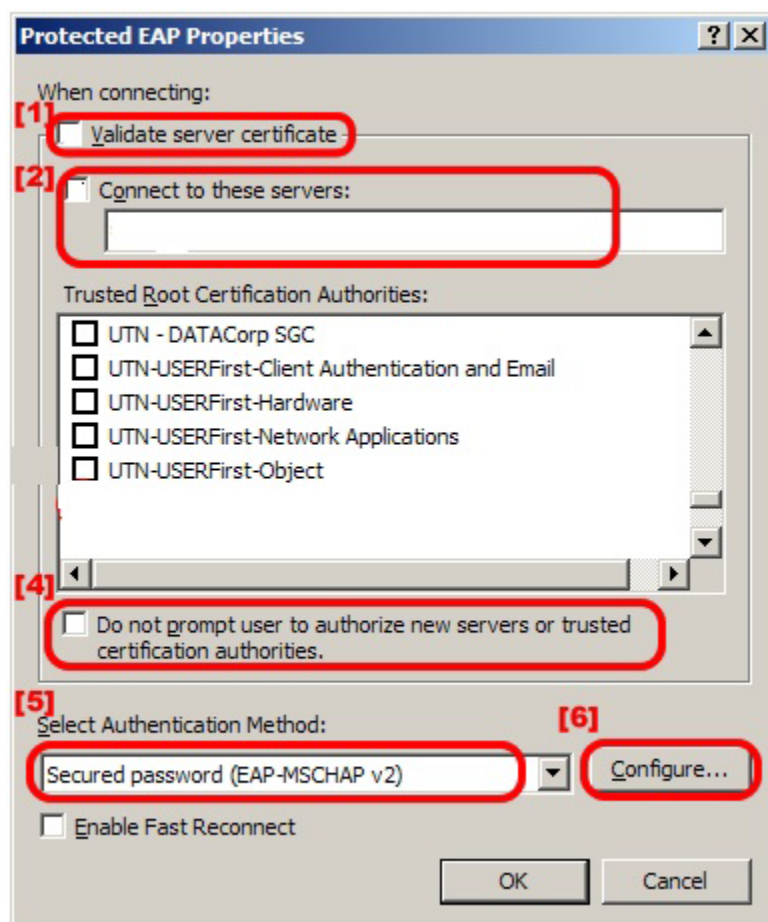
Uncheck **Validate server certificate**

Uncheck **Connect to these servers**

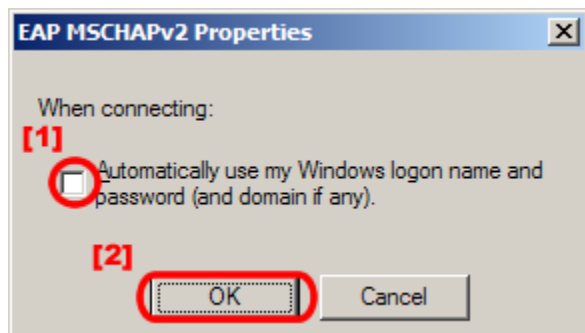
Un-check **Do not prompt user to authorize new servers or trusted certification authorities.**

Select **Secured password (EAP-MSCHAP v2)** in the 'Select Authentication Method:' field

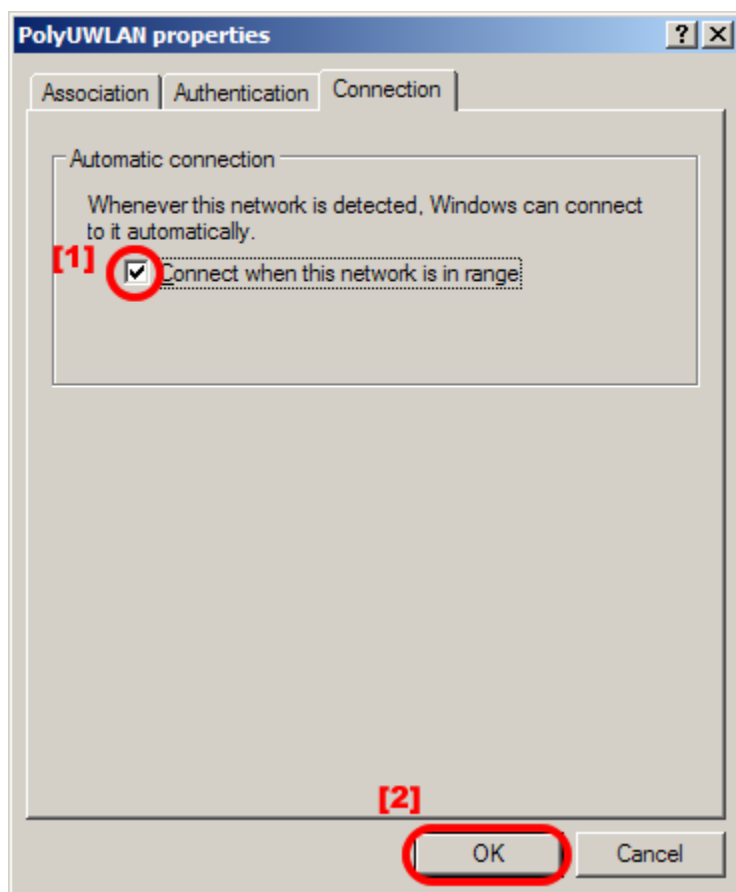
Click **Configure...**



Un-check **Automatically use my Windows logon name and password (and domain if any)**  
Click **OK** two times to close the two popup windows



Click the **Connection** tab  
Check **Connect when this network is in range**  
Click **OK**



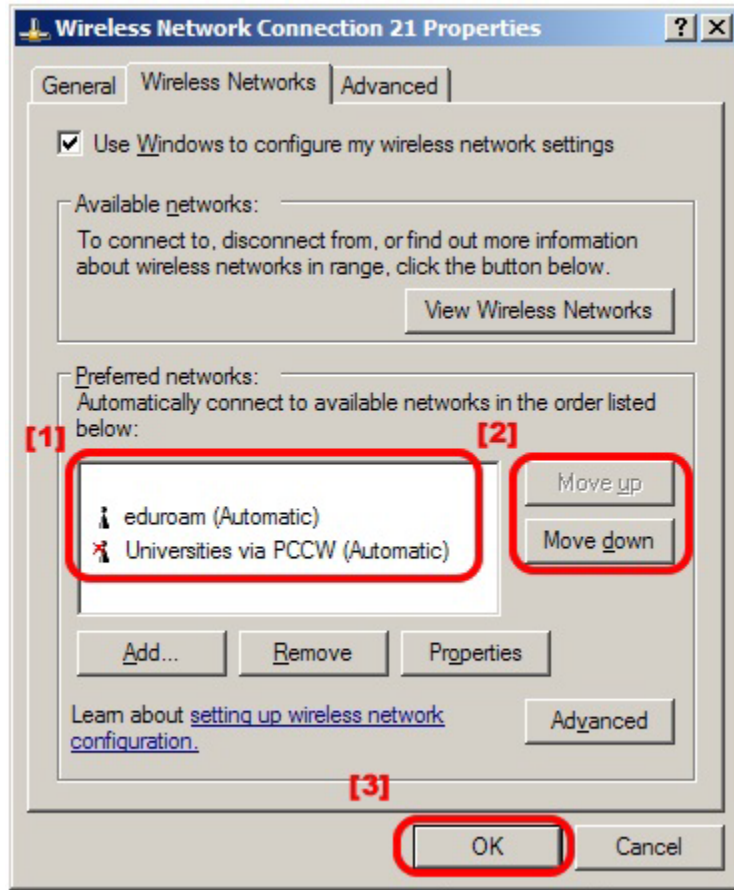


If there are more than one SSID configured, it is recommended to set the order of '**Preferred networks**' as shown below. To change the order :

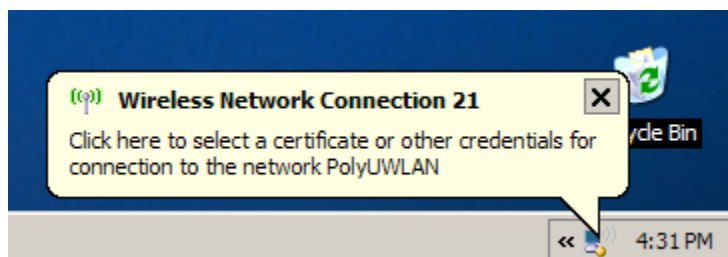
Select **eduroam** SSID.

Click **Move up** or **Move down** to change the order.

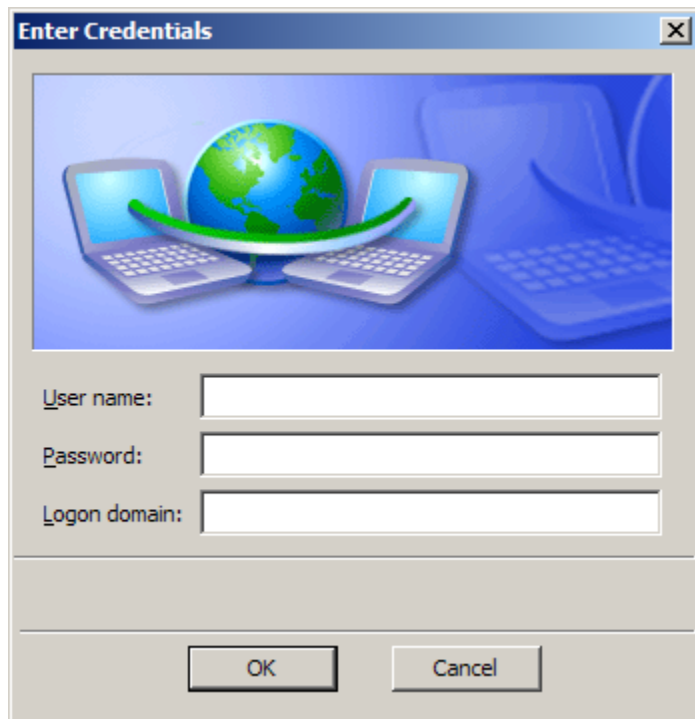
Repeat steps above until the order is as shown. Then, click **OK** to close the popup windows.



When your computer is in range of the WPA network, you will see the icon in the system tray. Click on it.



Enter in your **NetID** at **User name**  
Enter in your **NetPassword** at **Password**  
Leave the **Logon domain:** blank.  
Click **OK** two times to close the two popup windows.



The image shows a standard Windows-style dialog box titled "Enter Credentials". The title bar is blue with the text "Enter Credentials" and a close button (X) on the right. The main content area has a blue background with a central graphic of a globe and two laptops. Below the graphic are three text input fields. The first is labeled "User name:", the second "Password:", and the third "Logon domain:". At the bottom of the dialog are two buttons: "OK" and "Cancel".

You have completed the setup procedure. Please use a web browser to access the Internet for testing.